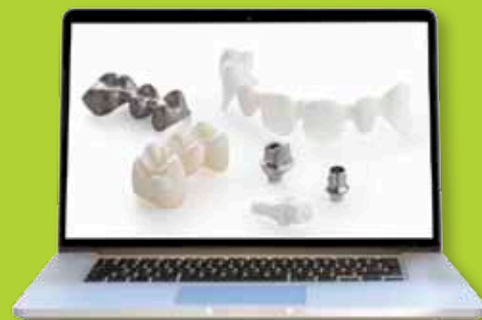


Straumann® CARES® for 3Shape General Information.



3Shape connectivity.

CUSTOMER REGISTRATION

Customer registration is necessary for communication with Straumann® and for order billing and shipping to insure that all aspects of an order such as delivery documents and invoices are accurate.

To gain access to Straumann customized prosthetics, Straumann specific data must be entered into 3Shape's internal registration.

The following information is needed:

- Contact data: Name of Dental Lab and Contact
- 3Shape System™ ID
- Straumann Customer Number

The shipping address can be different from the customer address. Both customer and shipping address must be in the same country. For consistency and to guarantee seamless shipping, fill in your Dental lab address in the same format:

DEFINE CONTACT SETTINGS:

1. Open 3Shape Dental System Control Panel



2. Select "Sites" under "Site Settings"



3. Choose your Lab Site ID (not Straumann Site) and configure the contact settings

The screenshot shows the 'Edit Site' interface. On the left, there is a 'Tasks' section with options like 'Import site(s) from server' and 'Import sites from Excel document'. Below that is a 'Table' with a list of sites, including 'Straumann, Gräfelting...'. A sidebar on the left contains various actions like 'Add', 'Add Dentist', 'Copy', 'Delete', 'Move up', and 'Move down', along with checkboxes for 'Show Dentists', 'Show Labs', and 'Show Manufacturers'. The main area is titled 'Edit Site' and contains several fields: 'ID' (91158), 'External ID', 'Name' (Straumann, Gräfelting 1608363968), 'Sub-site ID' (1), and 'Order number site ID' (with a 'Copy ID' button). Below these are checkboxes for 'Has scanner', 'Has CAD', 'Has CAM', and 'Show Die interface step'. A section titled 'Contacts settings' is highlighted with a red circle and contains fields for 'Address 1', 'Address 2', 'Zip code', 'City', 'State', 'Country' (set to Germany), 'Phone', 'Fax', 'Email' (andrea.auracher-frehe@straumann.co), 'Web address' (www.straumann.com), and 'Contact person' (CCA).

Ship to different address options within the order mask:

The screenshot shows a form titled 'Ship to different address' with a checked checkbox. Below the title, there is a 'Shipping address:' label followed by several input fields: 'Company name', 'Street name & No.', 'Zip' and 'City' (two separate boxes), a blank text box, and 'Country' (a dropdown menu).

Connectivity for the 3Shape Dental System™.

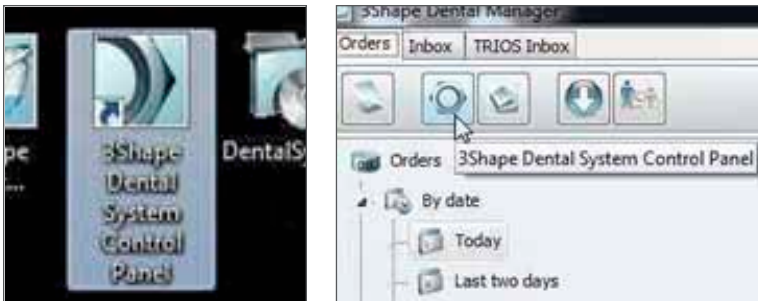
THE STRAUMANN® DME LIBRARY FOR THE 3SHAPE DENTAL SYSTEM

Three DME libraries by Straumann that define the interface to Straumann's milling center are available. These DME libraries are developed and validated by both 3Shape and Straumann. Straumann DME files can be found on straumann.us, straumann.ca, by contacting Straumann Technical Support or your local Straumann Laboratory Territory Manager.

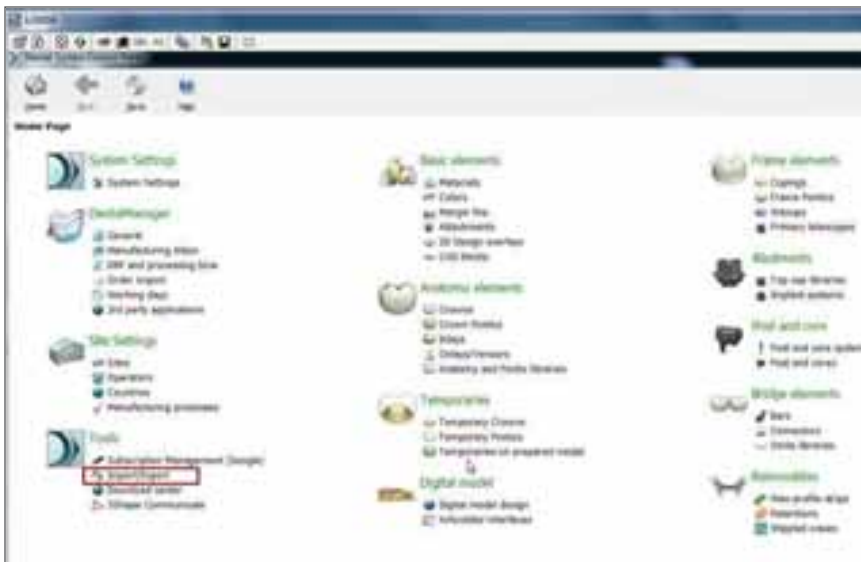
IMPORTING THE DME FILE IN THE 3SHAPE DENTAL SYSTEM

These instructions illustrate how to import a DME file in the 3Shape software. Importing depends on the customer's software version. The 3Shape customer should be familiar with this process.

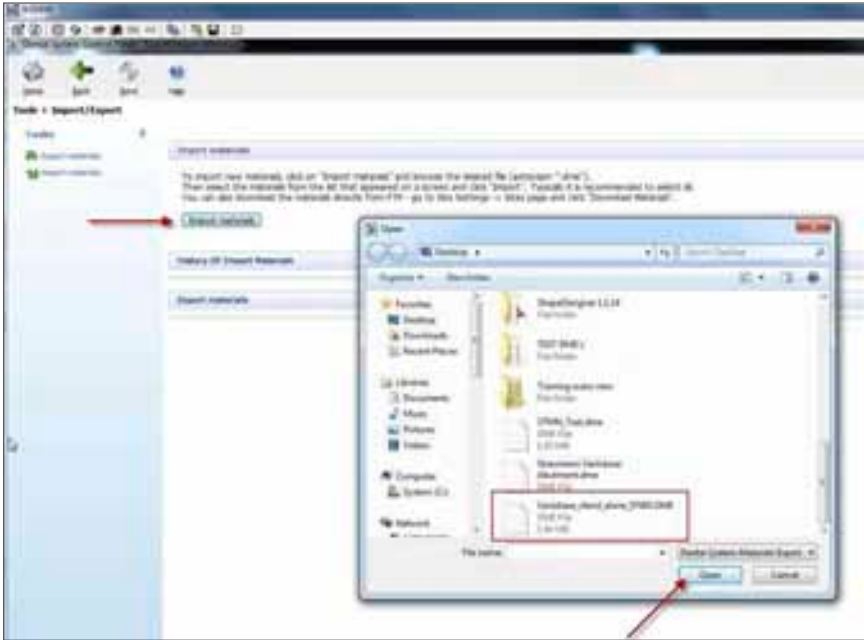
Open the "Dental System Control Panel" over the Desktop icon or the Dental Manager



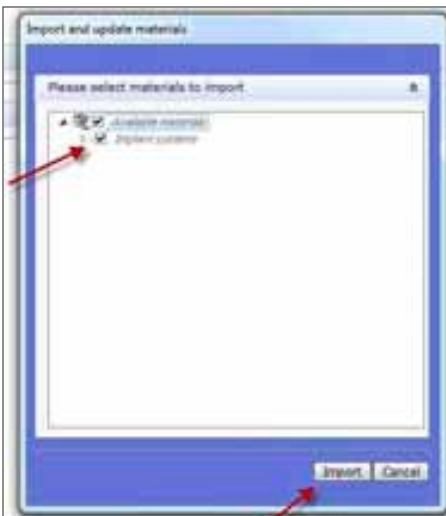
Go to "Tools" > "Import/Export"



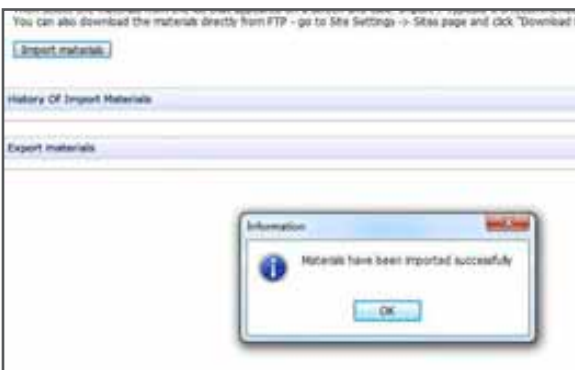
Click "Import materials", browse to the desired file (extension .dme) and open it



Select the material which you want to import and click "Import"



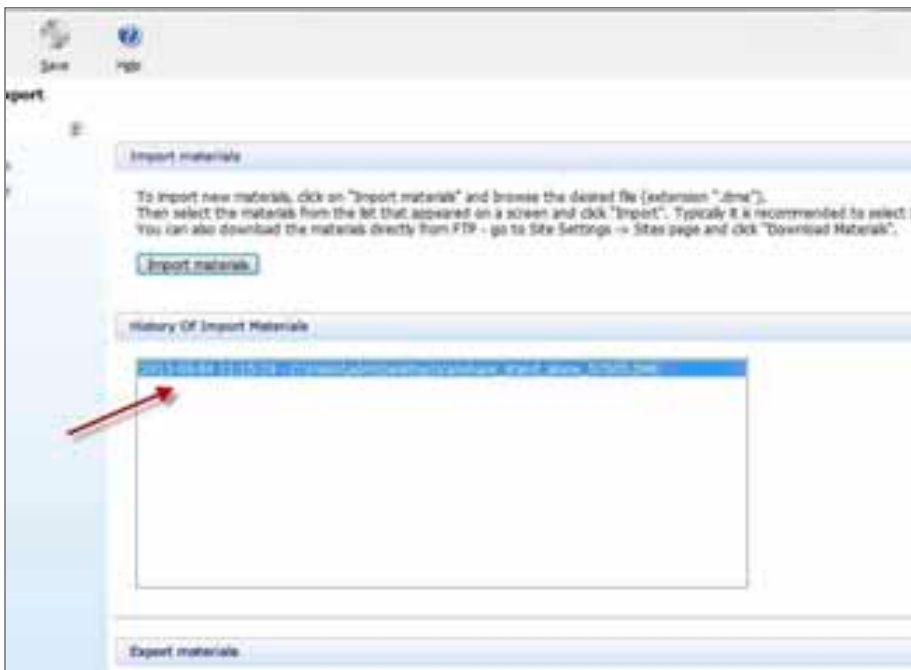
Materials have been imported



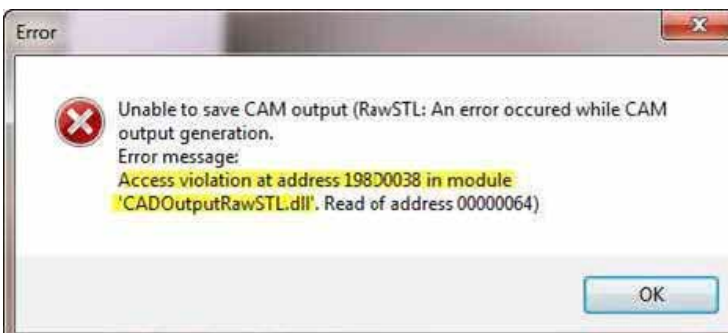
Caution: If a warning occurs click “OK” and continue with the import



The imported materials can be seen in “History Of Import Materials”



Caution: Customers with a **closed** 3Shape System™ are able to import DME files. However, closed systems will generate an Error message while finalizing the object.



This Error message can vary due to the specific configuration of the 3Shape system. The critical information displayed is **that it is not possible to generate a CAM output**. If this Error appears, the customer is advised to contact his distributor for further details on opening his system.

INSTALLATION OF THE STRAUMANN® DME LIBRARY

Straumann provides 3 DME Libraries for 3Shape Dental Systems™.

- CARES® Abutments for 2014 Software Version
- CARES Tooth Borne for 2014 Software Version
- Straumann Variobase for 3Shape (2013 and 2014 Versions)

Note

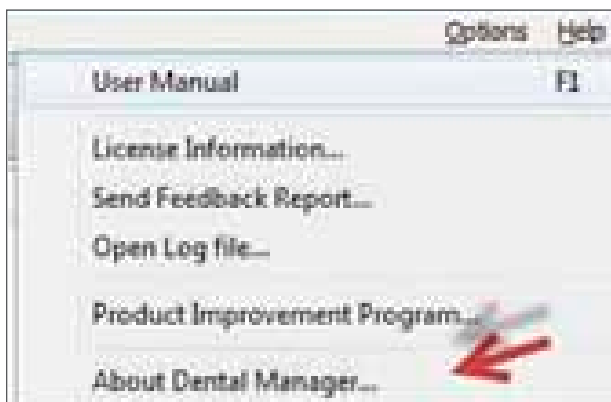
- The 2013 DME file for Straumann Variobase™ is compatible with the 2013 3Shape software version (2.8.x)
- The 2014 DME file for Straumann Variobase is compatible with the 2014 3Shape software version. (2.9.x)
- Issues may occur if a customer with a 2013 software version imports a DME file for the 2014 version. An error message will appear alerting the customer that his system will not work with this DME file.

WHERE TO FIND YOUR SOFTWARE VERSION

You have to open the 3Shape software to find the software version



It is also possible via help and “About Dental Manager”



INSTALL THE STRAUMANN® DME LIBRARY FILE:

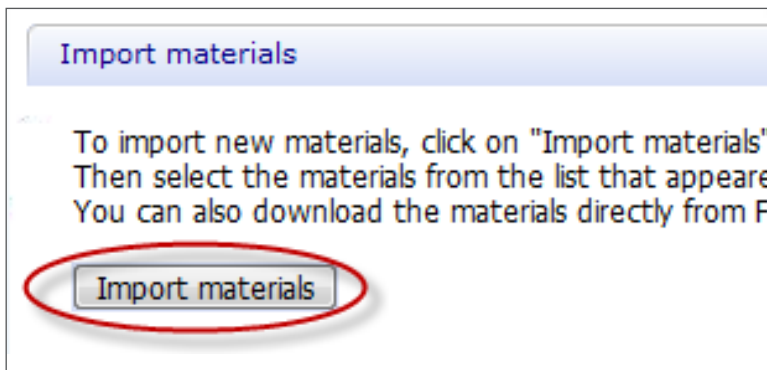
1. Open 3Shape Dental System™ Control Panel



2. Select "Import/Export" under "Tools"



3. Click on "Import materials" to open a stored DME library file



4. Select the stored Straumann DME library file on your PC to import

USING AND ORDERING STRAUMANN® MATERIALS

Please check the Straumann website regularly for new DME files with additional materials and indications.

Note: Each Straumann material has an IFU that can be obtained directly from ifu.straumann.com

CAUTIONS AND ADVICE

Scanner Source

The source of scanned data and preparation of the tooth model are critical for the quality of the interface to the prosthetics. Ensure that the scanned data correctly represents the patient situation in order to avoid the need for later filing and fitting tasks that may also reduce the strength of the restoration.

Products designed from scans made by 3Shape Scanners are approved by Straumann and are eligible for The Straumann Guarantee®.

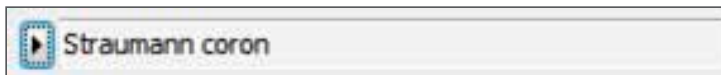
Blank size

Maximum blank sizes for manufacture in Straumann materials are not shown with the restoration design. If a design is bigger than the maximum blank size, your order cannot be manufactured. Adjustments must be made before resending. The maximum heights of Straumann blanks by material are:

- Ticon® 14.95 mm
- Coron® 17.45 mm
- Zerion® LT 15.70 mm
- Zerion® HT 15.45 mm
- Polycon® cast 14.90 mm
- Polycon® ae 15.90 mm

Indications and Materials

In the material toolbar the materials by Straumann are listed, e.g.:



The following indications and materials are available- the indications permitted depend on the material type.

Available indications

- Copings
- Crowns
- Standard bridges 2 to 16 units (no UC-bridge)
- One-piece abutments (only CAD-Abutments, no wax-ups)

Available materials

- Zerion LT
- Zerion HT (maximum size – 3-unit bridge)
- Coron
- Ticon
- Polycon ae
- Polycon cast
- Titan (abutments – not directly venerable, cannot be ordered as reduced anatomy)
- ZrO₂ (abutments – cannot be ordered as full anatomy solution)

Comments regarding limitations

- Design of indications not included above may result in restoration of insufficient strength and may not be manufactured
- Detailed information regarding materials and indications can be found on www.straumann.com or download Straumann CARES® Guide for iPhone® via Apple® App Store
- The following indications and materials are not supported:
 - Inlay/Onlay/Veneer
 - Telescopic crown
 - CARES® Variobase™ abutment
 - UC bridges
 - SRBB
 - Post core
 - Wax abutments
 - Attachments
 - Crowns and coping with a hole
 - Glass ceramics
- With Straumann Mono Scanbodies, the screw-hole must be closed (e.g. with wax) to improve the ease of scanning

CAUTIONS

Minimum and Maximum Dimension Controls

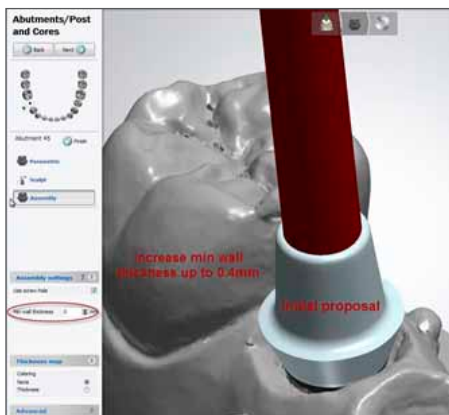
Straumann has developed and tested the limits of dimensions of features in the prosthesis type. These dimensions are controlled through the use of normal design tools in the Dental Designer software. Some of the limits can be exceeded through use of design tool combinations. When this occurs, the prosthesis may not have sufficient strength or in some cases, may not be manufactured.

Do not decrease cross sections or increase lengths using wax knives or material addition, when a limit has already been reached with geometry “handles” or other tools.

Abutment Screw Channel Minimum Wall-thickness

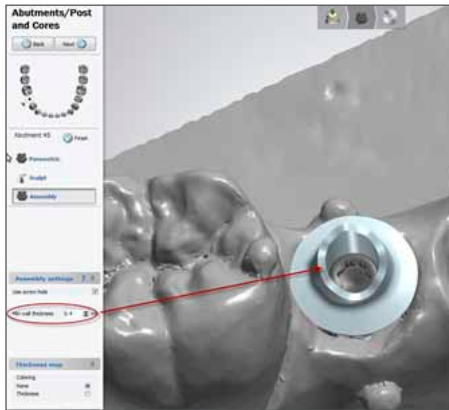
To automatically ensure the minimum wall thickness of an abutment, the following steps should be completed:

Within the 3Shape design mode, the abutment parameter “Min wall thickness” must be increased from 0.0 mm (default value) to a minimum of 0.4 mm. Consult Instructions for Use for minimum wall thickness parameters.



iPhone® is a registered trademark of Apple, Inc.

After the design is completed, the software automatically computes a minimum wall thickness to a minimum of 0.4 mm for the abutment. Consult Instructions for Use for minimum wall thickness parameters.



Margin thickness

- Do not decrease the default minimum values for margin thickness; the prosthetic may not be strong enough

Drill compensation

- Do not alter the default drill compensation values

Number of pontics

- Limit the number of pontics – please see ifu.straumann.com for the recommended maximum number of pontics in the anterior and buccal areas of mouth

Abutment should always have a hole

- Do not block the hole or the order cannot be milled

Cross-section of pontics

- Do not make a pontic smaller than the minimum connector cross-section area

Attachment types

- Do not use attachments or holes with Straumann® materials as they may not be manufactured

TERMS AND CONDITIONS (AGB) FOR STRAUMANN PRODUCTS

Practitioners must have appropriate knowledge and instruction in the handling of Straumann products and for using them safely and properly in accordance with their instructions for use. It is the practitioner's responsibility to use the device in accordance with the instructions for use and to determine, if the device fits the individual patient situation.

The Straumann Product is part of an overall concept and must be used only in conjunction with the corresponding original components and instruments distributed by Institut Straumann, its ultimate parent company and all affiliates or subsidiaries of such parent company ("Straumann"), except if stated otherwise in the instructions for use. If use of products made by third parties is not recommended by Straumann in the instructions for use, any such use will void any warranty or other obligation, express or implied, of Straumann.

International Headquarters

Institut Straumann AG
Peter Merian-Weg 12
CH-4002 Basel, Switzerland
Phone +41 (0)61 965 11 11
Fax +41 (0)61 965 11 01

Straumann North American Headquarters

Straumann USA, LLC
60 Minuteman Road
Andover, MA 01810
Phone 800/448 8168 (US) • 800/363 4024 (CA)
Fax 978/747 2490
www.straumann.us • www.straumann.ca