

Drilling Sequence for The Straumann® Bone Level Implants

STEPS 1–3 FOR Ø 3.3 MM IMPLANTS

- (1) Round bur, Ø 2.3 mm,
- (2) Round bur, Ø 1.4 mm,
- (3) Round bur, Ø 3.1 mm,
- max. 800 rpm

800 rpm max.

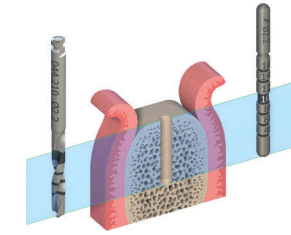


1

Pilot drill, Ø 2.2 mm,
max. 800 rpm

Alignment pins, Ø 2.2 mm

800 rpm max.

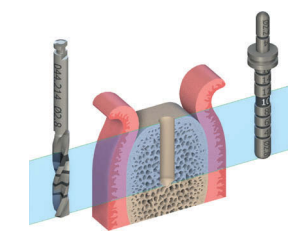


2

Pilot drill, Ø 2.8 mm,
max. 600 rpm

Depth gauge, Ø 2.2/2.8 mm
with distance indicator

600 rpm max.



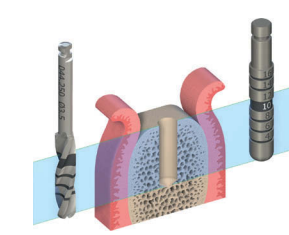
3

STEPS 1–4 FOR Ø 4.1 MM

Twist drill pro, Ø 3.5 mm,
max. 500 rpm

Depth gauge, Ø 3.5 mm

500 rpm max.



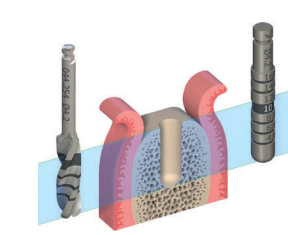
4

STEPS 1–5 FOR Ø 4.8 MM

Twist drill pro, Ø 4.2 mm,
max. 400 rpm

Depth gauge, Ø 4.2 mm

400 rpm max.



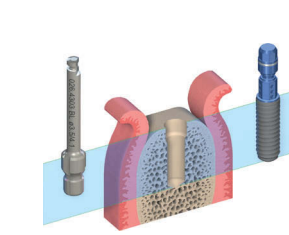
5

PROFILE DRILL OPTIONS

BL profile drill,
max. 300 rpm

Option 1: Bone Level

300 rpm max.



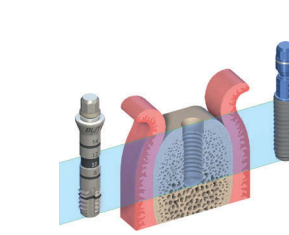
6

TAP REQUIREMENTS

BL/TE tap,
max. 15 rpm

*BL tap available for adapter only
*Required for dense bone
+ Ø 4.8 mm implants

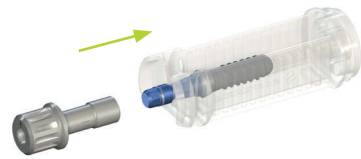
15 rpm max.



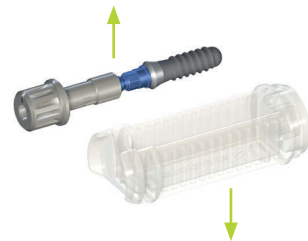
7

Placement with the Ratchet for The Straumann Dental Implant System

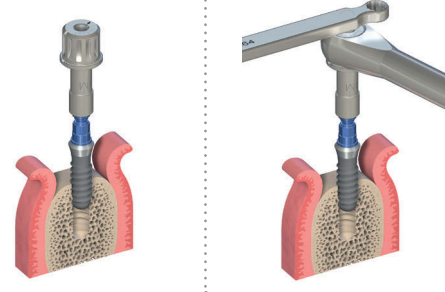
1



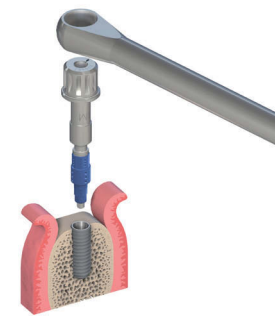
2



3



4



5

