

Straumann[®] CARES[®] Prosthetic App

For Dental Wings 3.5 Software Users

**What are the Differences for Dental Wings
Software Customers?**

Version 2.0

July 2013

Table of Contents

TABLE OF CONTENTS	1
1 INTRODUCTION	2
1.1 FOREWORD	2
1.2 ABOUT THE QUICK REFERENCE GUIDE	2
2 SETTINGS	3
2.1 MATERIAL MANAGEMENT	3
2.2 IMPLANT KIT CREATOR	3
3 GLOBAL PREFERENCES	3
3.1 USER CONNECTIONS	3
3.2 SAP REGISTRATION	4
3.3 SHIPPING	4
4 SPECIFIC STRAUMANN® MATERIAL RESTRICTIONS	5
4.1 SCAN IMPORT APPLICATION	5
4.2 EDIT ORDER	5
4.3 NATURAL CONNECTORS	5
4.4 TOOL COMPENSATION ON WHOLE SURFACE	5
4.5 MERGE SURFACES & APPLY TOOL COMPENSATION	6
4.6 PREHENSION ITEM	6
4.7 DESIGN "PATH WAY BLOCKERS" FOR ROUTE FORWARD OUT OF THE CAD APPLICATION MODULE	6
5 ORDER CREATION	7
5.1 ACCESS TO STRAUMANN® MATERIALS	7
6 IO – INBOX	7
6.1 CONNECTION	7
7 SCAN	8
7.1 INDICATION TYPES	ERROR! BOOKMARK NOT DEFINED.
7.2 SCAN PROCEDURE	8
7.3 IMPORT SCAN	8
8 PRODUCTION	9
8.1 SEND ORDERS TO STRAUMANN	9
9 STRAUMANN® QUALITY INSURANCE	9
9.1 ROUTING FORWARD TO ANOTHER STATUS	9
10 DISCLAIMER	10

1 Introduction

1.1 Foreword

The Straumann® CARES® Prosthetic App is an application for ordering Straumann CAD/CAM prosthetic restorations through the Dental Wings DWOS software.

The Straumann CARES Prosthetic App supports the dental technician in designing prosthetic frameworks and transferring the design of the restoration to a Straumann® CARES® CAD/CAM milling center.

1.2 About the Straumann CARES Prosthetic App

This guide is intended to give a basic understanding and overview of the Straumann CARES Prosthetic App. It identifies differences the dental technician may encounter from his/her current way of working with the Dental Wings software.

1.3 About this document

The focus of this document is the differences Dental Wings users may experience when working in the CARES Prosthetic App vs. the Dental Wings process. These differences can be in the application of the software, the material properties or the workflow for the various indications. Dental Wings and Straumann have minimized these differences but the validated workflow and production of Straumann CARES restorations require certain parameters and guidelines which may not be required by other providers.

The differences in the CARES Prosthetic App are explained with 2 headers:

“what” Describes the specific difference between the Dental Wings process and the CARES Prosthetic App process.

“why” Explains to the customer why this difference exists and is necessary.

In addition to this document Straumann provides tutorial videos for specific applications within the CARES® Software. The Straumann CARES Tutorial videos can be accessed via the following link and by selecting the “filter by product” “Straumann CARES CAD/CAM:

<http://www.straumann.us/en/professionals/resource-center/images-and-video-gallery/videos.html>

2 Settings

2.1 Material Management

What?

For Straumann materials most of the parameters are set as default.

Why?

Straumann material parameters are prosthesis type related. Changes within the Straumann validated limits can be performed using Dentist Preferences.

2.2 Implant Kit Creator

What?

Straumann Implant Kits are set to “read only”.

Why?

Straumann Implant Kits are protected against any kind of manipulation to ensure and secure the high quality of our Straumann **original to original** implant-abutment connection.

3 Global Preferences

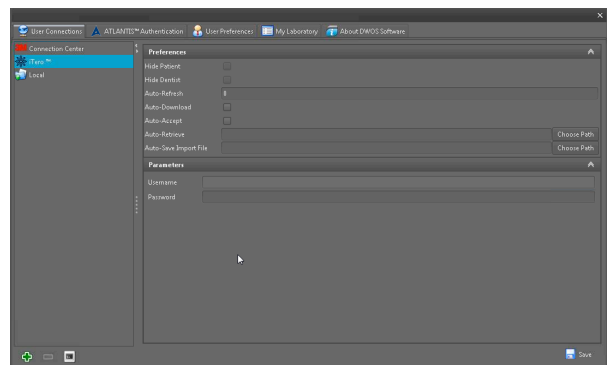
3.1 User Connections

What?

The Intra Oral Scanner connection is already pre-configured.

Why?

Straumann offers a pre-configured and verified connection to Intra Oral Scanners. Please call Straumann Technical Support in order to obtain the username and password.



3.2 SAP Registration

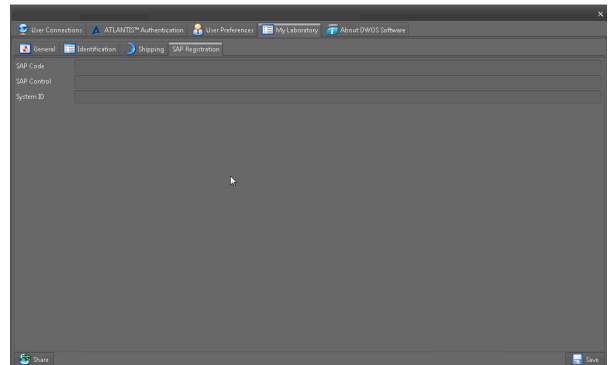
What?

As a customer, to obtain access to Straumann Production, some Straumann specific data must be entered into the “SAP Registration” tab.

Why?

The customer must register so that proper communication within Straumann’s ordering administration programs – such as delivery documents, invoicing, and other notifications - can be administered.

Any additional addresses in the software are not taken into account for orders coming from the CARES Prosthetic App.



3.3 Shipping

What

The shipping address can be different from the customer address. Both customer and shipping address must be within the same country.

Why?

Due to regulations and control requirements, this is a pre-condition.

4 Specific Straumann® Material Restrictions

4.1 Scan Import Application

What?

Customer cannot import STL Files (Preparation Scan Files) into the Straumann® CARES® Prosthetic App.

Why?

This ensures high quality CARES® prosthetics restorations with a proven and tested outcome.

4.2 Edit Order

What?

It is not possible to change from Straumann® materials to non-Straumann materials and vice versa.

Why?

Only Straumann materials can be ordered when working in the CARES Prosthetic App. This helps to ensure the integrity of the Straumann® CARES® validated digital workflow.

4.3 Natural Connectors

What?

The natural connector functionality does not work for Straumann® materials.

Why?

This ensures connector dimensions are in line with Straumann milling requirements.

4.4 Tool Compensation on Whole Surface

What?

For Straumann® materials this function is not allowed.

Why?

This ensures the integrity of the compensation according to the parameters of Straumann® production tools.

4.5 Merge Surfaces & Apply Tool Compensation

What?

This function is activated and cannot be deactivated.

Why?

Straumann® production requires merged objects.

4.6 Prehension item

What?

The Prehension item has fixed values (H=1.5mm; W=1.5mm; L=5mm).

Why?

Fixed values are required within the CARES Prosthetic App to help ensure the integrity of the milled material within the CARES Validated Workflow.

4.7 Design “Path Way Blockers” for route forward out of the CAD Application module

What?

An order cannot be sent if any of the following conditions occur:

- The connector thickness (cross section) is lower than the allowed specification
- The pontic thickness (cross sections) is lower than the specification
- The Min Wall Thickness is lower than the specification
- The Object(s) is/are bigger than specific material blank size

Why? Fixed values are required within the CARES Prosthetic App to help ensure the integrity of the milled material within the CARES Validated Workflow.

5 Order Creation

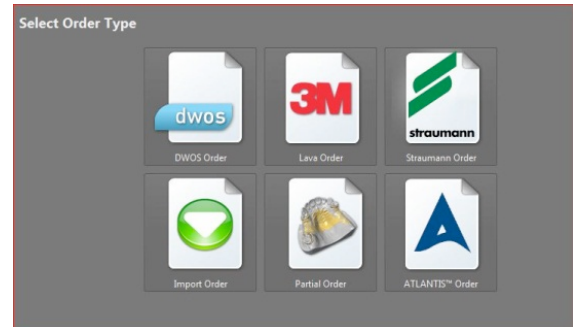
5.1 Access to Straumann® materials

What?

The Straumann® CARES® Prosthetic App allows the user to create a Straumann CARES order.

Why?

CARES restorations can only be sent to Straumann production facilities when a Straumann order has been created. This is due to Straumann's proprietary file format.



6 IO – Inbox

6.1 Connection

What?

Connection to Align iTero intra oral scanners is only possible with Straumann Materials and supported prosthesis types.

Why?

At this time, only Align iTero IOS data can be accepted into the CARES System.

7 Scan

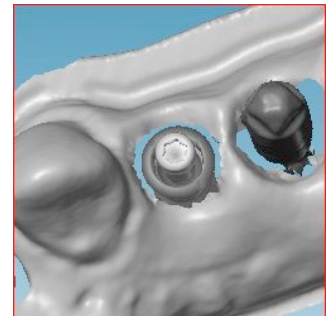
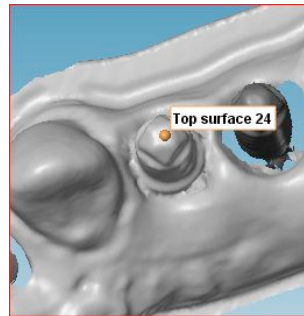
7.1 Scan Procedure

What?

“One Click” Scan body reconstruction – all implants need to be scanned at once. (One Straumann CARES® Scanbody is needed for each implant)

Why?

Straumann CARES Scanbodies can be reconstructed by clicking the top surface of the Scanbody without having to do any manual matching. This procedure helps to provide accuracy for the respective prosthetic design.



7.2 Selection of scan accuracy

What?

Always select the **Accurate** scan algorithm option for Straumann CARES Restorations.

Why?

This helps to ensure the integrity of the Straumann® CARES® validated digital workflow.

7.3 Import Scan

What?

Orders containing Straumann® materials can only be imported using IO-Inbox.

Why?

This helps to ensure the integrity of the Straumann® CARES® validated digital workflow.

8 Production

8.1 Send Orders to Straumann

What?

Only “Send to Straumann” is available for Straumann Orders

Why?

Straumann Materials can only be sent to Straumann Production facilities, not to third party milling facilities.



9 Straumann® Quality Assurance

9.1 Routing forward to another status

What?

When routing forward from one status to another, the order’s validity will be checked.

Why?

This helps to ensure the integrity of the Straumann® CARES® validated digital workflow.

10. Disclaimer

The content of this Straumann® CARES® Prosthetic App description is intended for Dental Wings users who have experience with Dental Wings CAD/CAM systems.

The Straumann CARES Prosthetic App is based on the DWOS (DentalWingsOpenSoftware) software architecture and contains many of the same principal functions.

If there are further questions about the Straumann CARES Prosthetic App and the respective materials, please contact your Straumann Laboratory Territory Manager.