

# More than a natural substitute.

## A long-lasting scaffold.

Straumann® XenoGraft is methodically processed from bovine bone and extensively tested to eliminate antigenicity and provide a favorable environment for new bone growth. Its **slow resorption rate delivers extended stability**—a critical advantage in cases that require a strong scaffold for long-term tissue support or esthetic needs.

### EXCELLENT BIOCOMPATIBILITY

- Deproteinized and delipidized, then terminally sterilized via gamma irradiation
- Optimal balance of calcium and phosphate, comparable to human bone

### OPTIMAL OSTEOINTEGRATION

- Low crystallinity provides a favorable surface to which new bone can adhere
- High porosity supports osteoconduction, enhancing integration of new bone

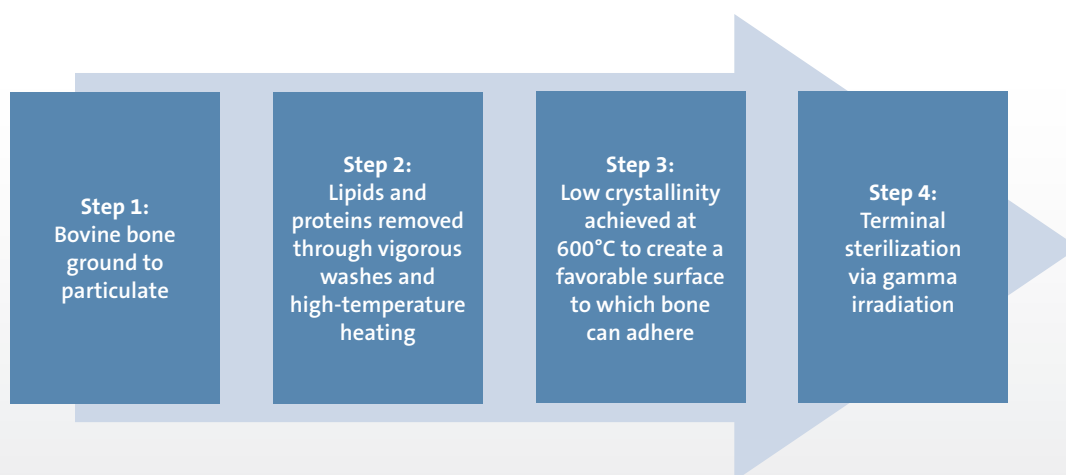
### DEPENDABLE STABILITY AND STRENGTH

- Creates a lasting scaffold with a favorable tactile feel when drilling for an implant site or osteotomy
- Slow resorption rate provides extended stability

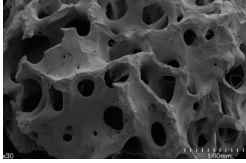
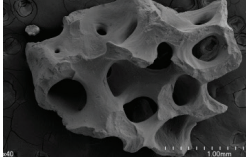
### FLEXIBILITY TO MEET CLINICAL NEEDS

- Combine with Straumann AlloGraft to augment mechanical strength, and Straumann Membrane Plus™ to maintain ideal space and long-term cell occlusion for maximum bone volume
- Best suited for sinus lifts and horizontal augmentations

### PROCESSING ASSURES COMPATIBILITY



## SIMILARITY TO HUMAN BONE

		HA content (Ca/P ratio)	Crystallinity
Straumann® XenoGraft		1.679	Low
Human Bone		1.68	Low

## CASE STUDY: LATERAL WINDOW SINUS AUGMENTATION



Baseline clinical situation



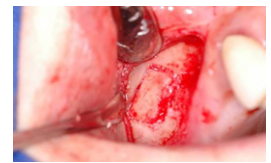
Panoramic view before  
sinus augmentation



Lateral window opening  
for sinus elevation



Sinus augmentation with  
Straumann XenoGraft



Window closure; resorbable  
membrane placed



Closure



Panoramic view just after  
sinus augmentation



Panoramic view 6 months  
after augmentation



Clinical situation 8 months  
after augmentation

Photos courtesy of Dr. Keun Young Chang

To learn more, **contact your  
Straumann Territory Manager or Customer Service.**

Buy online at [straumann.us/eShop](http://straumann.us/eShop).



### International Headquarters

Institut Straumann AG  
Peter Merian-Weg 12  
CH-4002 Basel, Switzerland  
Phone: +41 (0)61 965 11 11  
Fax: +41 (0)61 965 11 01

### Straumann North American Headquarters

Straumann USA, LLC  
60 Minuteman Road  
Andover, MA 01810  
www.straumann.us  
www.straumann.ca  
Phone: 800.448.8168 (US) • 800.363.4024 (CA)  
Fax: 978.747.2490

© Straumann USA, LLC 2014. All rights reserved.

Straumann® and/or other trademarks and logos from Straumann® that are mentioned herein are the trademarks or registered trademarks of Straumann Holding AG and/or its affiliates. All rights reserved. May not be available in all countries, subject to regulatory approval and market release. Please ask your Straumann Territory Manager for more information and availability.