



INSIGHT AND INNOVATION

COMMITTED TO
SIMPLY DOING MORE
FOR DENTAL PROFESSIONALS

A man with a mustache, wearing a white lab coat over a blue shirt and tie, is working in a dental laboratory. He is focused on a task, using a small tool to work on a dental model held in a blue and black frame. The background shows various dental equipment, including a microscope and a workbench with a lamp. The overall scene is brightly lit, typical of a professional dental lab.

“
STRAUMANN’S SALES ORGANIZATION PROVIDES AN UNPRECEDENTED LEVEL
OF SUPPORT HELPING ME TO EXPAND MY CLIENT BASE WITH NEW GPs AND ORGANIZING EDUCATIONAL PROGRAMS ON MY BEHALF.
IT’S LIKE I HAVE MY VERY OWN BUSINESS DEVELOPMENT TEAM.”
”

Nelson Rego

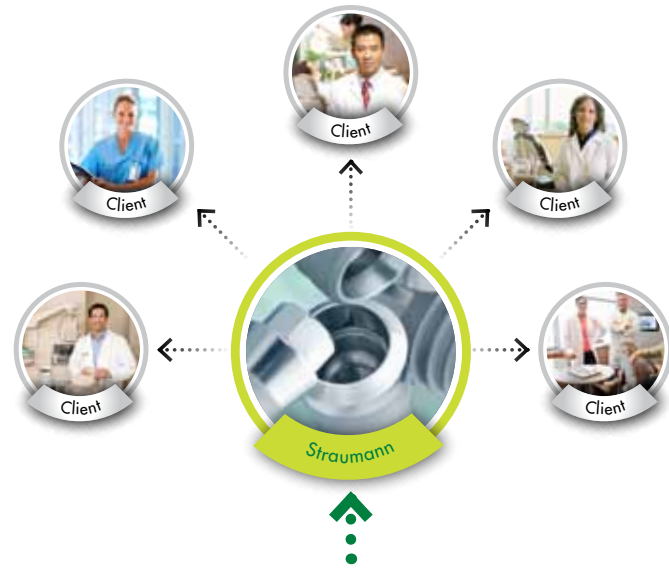
Smile Designs by Rego

Santa Fe Springs, CA

GROW YOUR BUSINESS

As one of the world's largest dental manufacturers, Straumann's influence and reach can have a profound effect on your laboratory's growth. Straumann's product solutions deliver reliable performance for your laboratory and the satisfaction of your referring dentists.

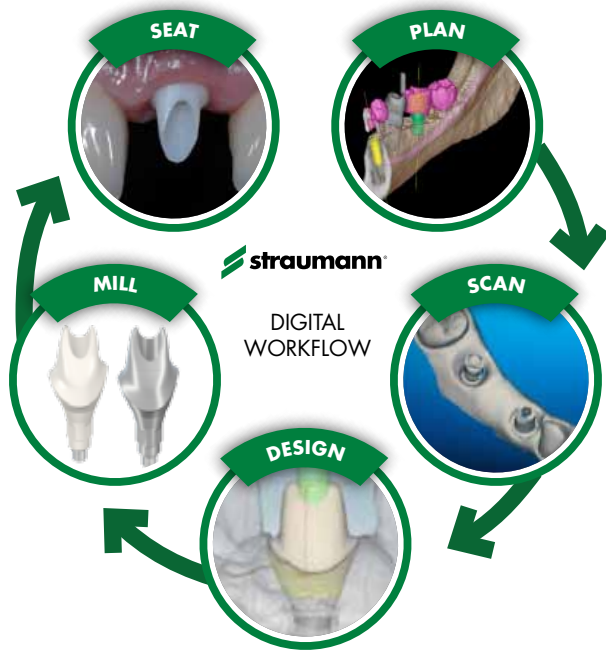
- **Business Growth:** Straumann specialists are uniquely qualified to provide training, guidance, and even access to new customers.
- **Education for Growth:** Straumann provides you opportunities to meet, educate, and demonstrate value to new clients.
- **Innovation for Growth:** Straumann's commitment to innovation supports your drive to maintain a competitive advantage. The exacting performance standards of Straumann enable you to complete each case with confidence and bolster your laboratory's reputation.



Gain Access to a Greater Number of Clients through Straumann



EFFECTIVE NETWORK COLLABORATION



Straumann's legacy of innovation includes a robust digital platform that fosters accurate impressions, predictable treatment planning, and efficient implementation across the restorative continuum of care. Network services now include:

- **Digital surgical planning:** Prosthodontically driven implant planning and local fabrication of scanning and surgical templates through **Straumann Guided Surgery: coDiagnostiX™** computer-guided surgery and **gonyX™**.
- **Digital impression making:** With **Cadent iTero®** precise impressions, ease of material selection, and an automatic data link help ensure a steady stream of new and recurring business.
- **Scanbody:** With the Straumann **Scanbody**, a digital impression of the implant site can be taken and exported for the design of a customized abutment on the **CARES CS2**.
- **CADCAM:** The Straumann platform supports a broad range of materials and multiple restorative designs—all facilitated by the accurate digital impression.
- **Advanced ceramics:** Predictable fabrication of high-strength, metal-free restorative solutions featuring **IPS e.max®** and **IPS Empress®** and a new resin nano-ceramic material, **3M™ ESPE™ Lava Ultimate Restorative** by Straumann CARES®.
- **Choose Your Workflow:** The new **CARES SYSTEM 7.0** Software from **Dental Wings™**, **3M ESPE** and **Straumann** is designed to let you enjoy it all: precision, high quality, leading material and application choice through the flexibility of the validated and external workflows with **CARES SYSTEM 7.0**. The core component of the software is based on **Dental Wings' DWOS** platform. The Straumann digital network facilitates multidisciplinary communication and collaboration to enhance productivity, gain efficiencies, and achieve restorative excellence.





I CAN SAVE TIME AND MONEY
BY DESIGNING RESTORATIONS STRAIGHT FROM
AN INTRAORAL SCAN AND
AVOIDING THE COST
AND INCONVENIENCE
OF POURING A STONE MODEL.”

Chris May

May Dental Arts

Fenton, MO



THE CROSSFIT® CONNECTION
ON THE STRAUMANN BONE LEVEL IMPLANT
**CANNOT BE PRECISELY
REPRODUCED**
BY OTHER MANUFACTURERS.
I WANT THE BEST FOR MY
CUSTOMERS AND OUR PATIENTS.
THAT'S WHY I USE STRAUMANN. ”

Mark Peters, RDT

Peters Dental Ceramic Studio Ltd.

Toronto, Ontario

RESOUNDING STRAUMANN QUALITY

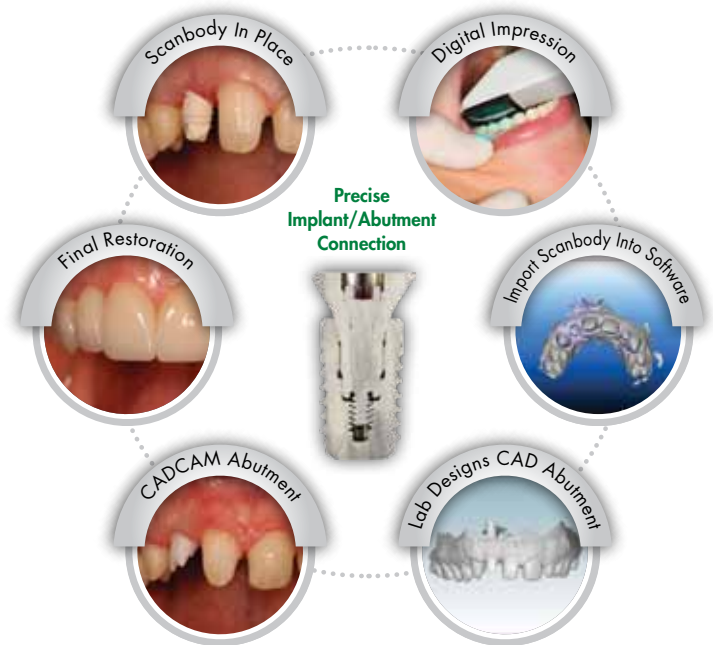
You expect predictable performance to support your business, and Straumann has pioneered the development of innovative implant surface technologies and abutment connections whose long-term success and reliability have been documented in the literature.

- **Specialization:** From the reliability and simplicity of the **Morse Taper™** connection to the innovative design of the **CrossFit®** connection, our implant components continue to set industry standards for precision, fit, and stability.
- **Reliability:** The success of SLA®, SLActive®, synOcta® and CrossFit Connections achieved with Straumann implant restoratives are further reinforced by a warranty that supports your business.
- **Simplicity:** Our digital solutions are easily implemented within your existing workflow and the materials you use daily—yet provide tremendous efficiency when combined with digital scanning for local fabrication of scanning and surgical templates.



We offer a lifetime limited warranty* on all Straumann Implants. Straumann Titanium Abutments come with a 10-year warranty, and our Ceramic Abutments have a 5-year warranty—further assuring the peace of mind and confidence of the dental team and their patients.

*Lifetime warranty for implants purchased after April 1, 2011.



ASK YOUR REPRESENTATIVE TODAY HOW
STRAUMANN RESTORATIVE SOLUTIONS CAN GROW
YOUR BUSINESS, EXPAND YOUR NETWORK, AND IMPROVE QUALITY.

International Headquarters

Institut Straumann AG
Peter Merian-Weg 12
CH-4002 Basel, Switzerland
Phone +41 (0)61 965 11 11
Fax +41 (0)61 965 11 01

Straumann USA

Straumann USA, LLC
60 Minuteman Road
Andover, MA 01810
Phone 800/448 8168
978/747 2500
Fax 978/747 2490
www.straumannusa.com

Straumann Canada

Straumann Canada Limited
3115 Harvester Road, Suite 100
Burlington, ON L7N 3N8
Phone 800/363 4024
905/319 2900
Fax 905/319 2911
www.straumann.ca
